



## Get Started with your SocketScan® S550

**Thank you for purchasing the S550,  
the NFC reader/writer for your app!**



- Made for tap-and-go, smart card and NFC applications
- Reads HF tags and writes lock/unlock tags
- Works with supported applications over Bluetooth Low Energy BLE
- Programmable audible feedback
- Intuitive changeable LEDs



Learn More

Go Green - For manuals, go to [socketmobile.com/downloads](http://socketmobile.com/downloads)

# Let's get started with your S550 and compatible app!



\*Compatible apps are created with Socket Mobile's Capture SDK.

# Package Contents



SocketScan  
S550



Charging  
Cable

## Bonus items:



Membership  
Demo Pass



Active  
Surface  
(non slip)



Tap Here  
Sticker



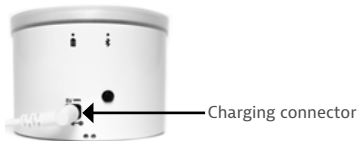
Security  
Cable

For the complete user guide: [socketmobile.com/downloads](http://socketmobile.com/downloads)



## 1. Charge Your S550

Connect to power using the charging cable and charge the battery.



## 2. Power On

Press the power button to turn on when S550 is battery operated.



\*Automatically turns on when connected to power.

## 3. Pair Your S550

The S550 will announce the mode "Reader"

**Step 1:** Open your app, wait until you hear "connected", then you are ready to go! (Your app is designed to connect automatically to the S550)

To register, download Socket Mobile Companion app.



No app? Download Nice 2CU from the app store. This simple app will demonstrate a quick check in/check out.



## 4. Read NFC Data

Launch your app and place membership card or mobile pass on top of the reader.



**Congratulations, your S550 is set up!**

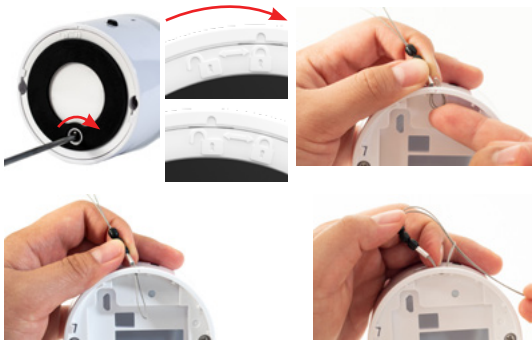
## Optional Customization

Place the Active Surface and/or TAP HERE sticker

Step 1: Peel plastic off to place on top of the S550.



## Optional Customization



### Attach Security Cable

**Step 1:** Remove battery door.

**Step 2:** Feed the string loop through the eyelet.

**Step 3:** Pull the gimbal through the string loop.

**Step 4:** Pull tight so the string loop is secure.



## Important Information

### Safety, Compliance and Warranty

#### Safety and Handling:

See Safety and Handling in the User Guide and Regulatory Compliance.

[www.socketmobile.com/regulatory-compliance](http://www.socketmobile.com/regulatory-compliance)

#### Regulatory:

Regulatory information, certification and compliance marks specific to the Socket Mobile Barcode scanner are available in the User Guide or Regulatory Compliance at:

[www.socketmobile/regulatory-compliance](http://www.socketmobile/regulatory-compliance).

#### IC and FCC Compliance Statement:

This device complies with Industry Canada license exempt RSS standard(s). This device complies with part 15 of the FCC rules. Operation is subject to the following two conditions: (1) this device may cause interference, and (2) this device must accept any interference, including interference that may cause undesired operation.

#### EU Compliance Statement:

Socket Mobile hereby declares that this wireless device is in compliance with the essential requirements and other relevant provisions of the R&TTE Directive.



### Battery and Power Supply:

The scanner contains Battery Friendly® technology-rechargeable, replaceable batteries lasting over 8 hours.

Rechargeable batteries may present a risk of fire or chemical burn if mistreated. Do not charge or use the unit in a car or similar place where the inside temperature may be over 60 degrees C or 140 degrees F. For the full battery and battery charging warning statement and disposal information, go to User Guide or Regulatory Compliance:

[www.socketmobile.com/regulatory-compliance](http://www.socketmobile.com/regulatory-compliance)

### Limited Warranty Summary:

Socket Mobile Incorporated (Socket) warrants this product against defects in material and workmanship, under normal use and service, for one (1) year from the date of purchase. Product must be purchased new from a Socket Authorized Distributor or Reseller. Used products and products purchased through non-authorized channels are not eligible for this warranty support. Warranty benefits are in addition to rights provided under local consumer laws. You may be required to furnish proof of purchase details when making a claim under this warranty.

Consumables such as batteries, removable cables, cases, straps, and chargers: 90 day coverage only.

For more warranty information, visit:

<https://www.socketmobile.com/warranty>

