



SocketScan® S700

Ergonomic and Elegant

The SocketScan S700 1D linear barcode scanner with Bluetooth wireless technology scans on paper or screen. It has a light-weight, ergonomic structure, and a long-lasting battery to withstand entire work days. The lights for battery, Bluetooth and scanning notifications make the scanner more intuitive to use. The S700 is designed to be software compatible with all applications. Updates on operating systems may alter the devices' performance.

For the most reliable and consistent performance, please verify with your application provider that Socket Mobile's latest Capture SDK was implemented in your app.

This scanner is ideal for retail POS, field service, inventory management, asset tracking and more. Use our Companion App for easy set up and configuration.



Certified by Apple® for iOS devices (iPad®, iPhone®, iPod Touch® devices) and compatible with Android and Windows®

Features

- Bluetooth Wireless Technology - Connects easily to a wide range of Bluetooth enabled smartphones, tablets, notebook and desktop computers
- Certified by Apple® for iOS devices – Guaranteed Compatibility - With Capture SDK integrated in over 700+ applications, Socket Mobile scanners are one of the most natively integrated scanners available today. Socket Mobile Scanners are also 100% compatible with any application out-of-the-box in HID (keyboard emulation) mode.
- Compatible with all Android and Windows devices and applications
- Scanning - Reads all common 1D / linear and stacked barcodes
- Exceptional Ergonomics - Small, lightweight, and fits perfectly in the hand for comfortable use over extended periods
- Long-Lasting, Replaceable Battery – Power to last a full work day, up to 9 hours
- User Indicators – Intuitive LEDs, beeps, and vibrations let users know battery, Bluetooth connection and scanning status
- User Feedback - Audible tones and hand pulsation
- Protective Material - Made with antimicrobial material for protection against potentially harmful bacteria
- Color Options - Black, Blue, green, red, white and yellow colors enable style, corporate-branding for personalization and in easy to find in varying work environments
- Application Integration – Socket Mobile's Capture SDK enables integration in your applications to improve business productivity with fast, efficient and reliable data transfer over Bluetooth wireless technology
- Wearable - Includes wrist strap. Holster, lanyard and retractable clip available (sold separately)
- Designed and Assembled in the USA
- Developer Support Available
- 1-Year Warranty



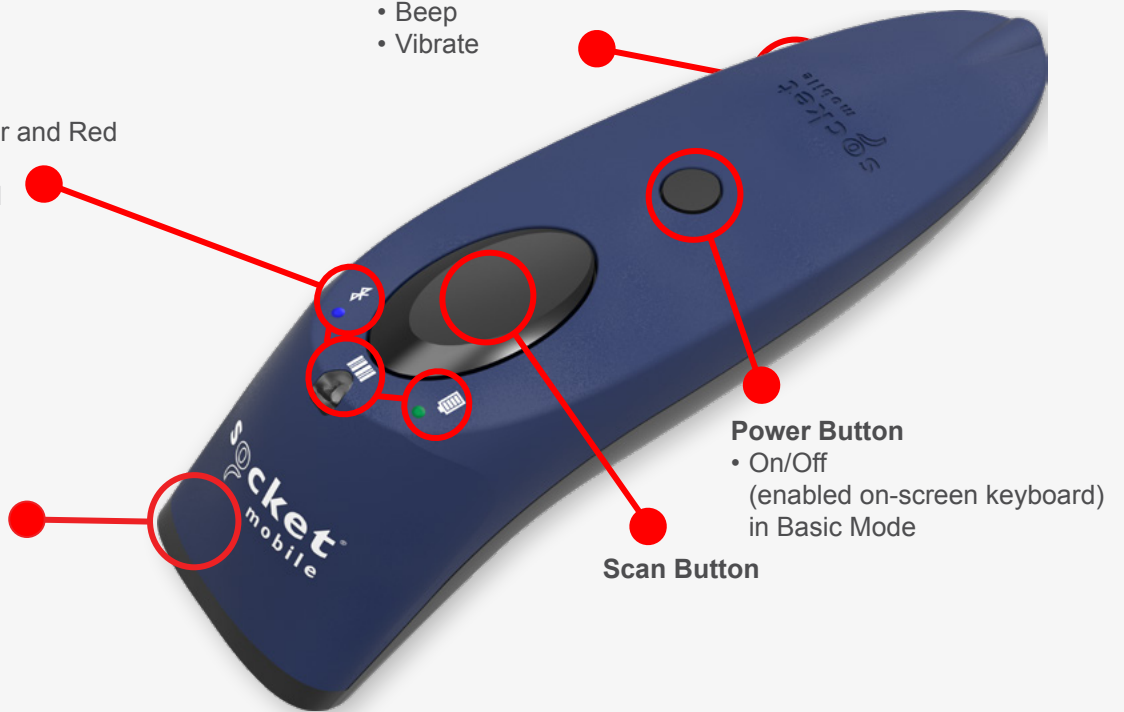
Status Indicators

- Beep
- Vibrate

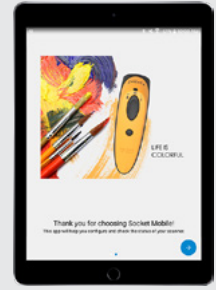
Intuitive LED Indicators

- Battery LED: Green, Amber and Red
- Bluetooth LED: Blue
- Scan LED: Green and Red

Weight/Mass
• 4.0 oz. (113 g)



- (1) SocketScan S700, 1D Imager Barcode Scanner
- (1) Charging Cable
- (1) Wrist Strap
- (1) Get Started Insert



Socket Mobile Companion
Download for Free!

The S700 is available in 6 colors:



Colors:	S700	S700 w/ Black Charging Dock	S700 w/ White Charging Dock
Black:	CX3803-2563	CX3805-2565	
Blue:	CX3360-1682	CX3465-1933	CX3484-1979
Green:	CX3395-1853	CX3463-1931	CX3524-2126
Red:	CX3391-1849	CX3461-1929	CX3522-2124
White:	CX3397-1855	CX3464-1932	CX3483-1978
Yellow:	CX3393-1851	CX3462-1930	CX3523-2125

Optional Accessories

Charging Stand



Great for using AutoScan Mode

Charging Dock



Ideal as a desktop charger

Durable Retractable Clip



Provides quick access to scanner

Holster



Safe and accessible placement

Wrist Strap



Keeps the scanner at your fingertips

Scanner & Phone Holder



Nice one-handed option

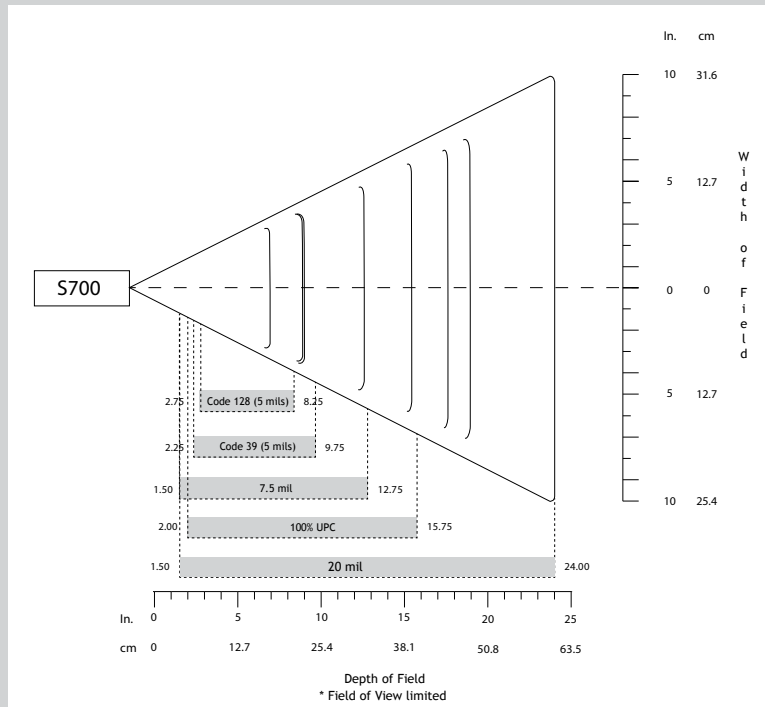
Warranty

Scanner:	Standard one year limited warranty
Accessories:	90 days
Extended Warranty: (sold separately)	www.socketmobile.com/socketcare



Default Barcode Symbologies:	Code 39, Code 128, EAN-13/JAN, EAN-8/JAN, GS1 Databar, GS1 Databar Expanded, GS1 DataBar Limited, GS1-128, Interleaved 2 of 5, UPC A, UPC E0
Supported Barcode Symbologies:	Bookland EAN, Chinese 2 of 5, Codabar, Code 11, Code 39, Code 93, Code 128, EAN-13/JAN, EAN-8/JAN, GS1 Databar, GS1 Databar Expanded, GS1 DataBar Limited, GS1-128, Interleaved 2 of 5, ISBT 128, Korean 3 of 5, Matrix 2 of 5, MSI, Plessey, UPC A, UPC E0, UPC E1
Scan Angle:	53°
Optical Resolution:	4 mil/0.1mm
Print Contrast:	30% minimum

Reading Distance:



1D codes 5.7 to 50.8 cm (2.25 to 13.39 in) Resolution
Depends on barcode size, symbology, label media

Battery

Battery:	2 AA NiMH rechargeable batteries (replaceable battery)
Charge Time:	~6 Hours
Battery Life:	Standby time: over 20 hours
Per Full Charge:	Active Scan Time: 80,000 scans within 9 hours (based on 2 scans every 1 second) 7,000 scans within 7 hours (based on 1 scan every 4 seconds)
Note:	Battery life varies depending on ambient temperature, ambient light and age of battery.

Scanner Type

Technology:	1D Barcode Linear Imager
Aimer:	Visible Red LED (625 nanometers)

Bluetooth (wireless connection)

Bluetooth Radio:	Class 2 Bluetooth, version 2.1 + EDR (Enhanced Data Rates) with 56-bit data encryption
Bluetooth Range:	Up to 10 m (33 ft.) depending on environment, range limit is usually due to the Host Device (phone, tablet or notebook)
Bluetooth Profiles:	Basic Mode - Human Interface Device (HID)*, Application Mode - Serial Port Profile (SPP) and Application Mode - MFi-SPP. Some Operating Systems or smartphone/tablet models may support only one profile. <i>*By default, the scanner is set to Basic Mode (HID).</i>

Ambient Light:	From 0 to 100 000 lux From pitch black to direct sun light
Operating Temperature:	0° to 45° C (32° to 113° F)
Storage Temperature:	-40° to 70° C (-40° to 158° F)
Relative Humidity:	95% at 60° C (140° F) (non-condensing)
Drop Specifications:	4 ft. to linoleum

Operating System compatibility

Android OS: Basic Mode (HID)* & Application Mode (SPP)	Mac OS: Basic Mode (HID)* only
Apple iOS: Basic Mode (HID)* & Application Mode (MFi-SPP)	Windows OS: 10, 8, and 7: Basic Mode (HID)* & Application Mode (SPP)

Compatible with devices supporting Basic Mode (HID)* protocol

ANSI, English UK, English, French, German, Italian, Japanese, Polish, Spanish and Swedish

**By default, the factory settings of the Socket Mobile Scanners are set to Basic Mode (keyboard emulation: HID). In order to use the scanner with an application using Capture SDK, the scanner must be configured in Application Mode (Bluetooth Serial Port Profile: SPP).*

Certified by Apple® for iOS devices (iPad®, iPhone®, iPod Touch®) and compatible with Android and Windows®.




Certification & Regulatory

Bluetooth SIG:	Declaration ID: D030473 QD ID: 82009
Electrical Safety:	Certified to IEC 60950-1, UL 60950-1, CAN/CSA C22.2
Environmental:	Environmental: RoHS EN 50581
EMI / RFI:	FCC Part 15 Class C, RSS 210, iCES 003, C-Tick, CISPR 22, CE EN55022, EN55024, TELEC FCC ID: T9J-RN42 IC ID: 6514-RN42 Telec: 201-125799
LED Safety:	IEC/EN 62471 (EXEMPT GROUP)




Common Uses

Retail/Point of Sale	Warehouse management
Office use	Shipping and Receiving
Healthcare	Field Sales/Service
Mobile Tracking	Hospitality

socketmobile.com	sales@socketmobile.com	sales-japan@socketmobile.com
Worldwide: +1 510 933 3000	Asia Pacific: +1 510 933 3122	Japan: +8190 9808 0518
North America: +1 800 552 3300	Germany: +41 62 834 07 80	Japan (Toll Free): +81 (800) 9190303
EMEA & Russia: +41 62 834 07 80	Switzerland: +41 62 834 07 80	Latin America: +1-510-933-3153
France: +33 (801) 840504	Switzerland (Toll Free): +41 (800) 898003	Taiwan (Toll Free): +886 00801491497
Malaysia (Toll Free): +60 (1800) 818234	UK/Ireland/South Africa: +44 (800) 0487363	

©2021 Socket Mobile, Inc. All rights reserved.Socket®, the Socket Mobile logo, SocketScan®, DuraScan®, Battery Friendly® are registered trademarks or trademarks of Socket Mobile, Inc. Microsoft® is a registered trademark of Microsoft Corporation in the United States and other countries. Apple®, iPad®, iPad Air®, iPad mini®, iPad Pro®, iPhone®, iPod touch®, Objective-C®, Swift™, and Xcode® are registered trademarks of Apple, Inc., registered in the U.S. and other countries. The Bluetooth® Technology word mark and logos are registered trademarks owned by the Bluetooth SIG, Inc. and any use of such marks by Socket Mobile, Inc. is under license. Other trademarks and trade names are those of their respective owners.